



**BATTELLE**  
Arctic Research Operations

# Battelle ARO – Supporting U.S. NSF Projects in Greenland

Kangerlussuaq Science Workshop – 27 January 2026

# Battelle-Arctic Research Operations: Introduction

- **US National Science Foundation Contractor supporting NSF-funded science projects in Arctic regions**
- **Comprised of companies and people dedicated to supporting ongoing research**
  - Battelle – prime contractor
  - Polar Field Services – primary field operations support
  - University of Colorado Anschutz – medical support
  - Taivara – data support
  - UIC Science – Ukpeaġvik Iñupiat Corporation – Alaska



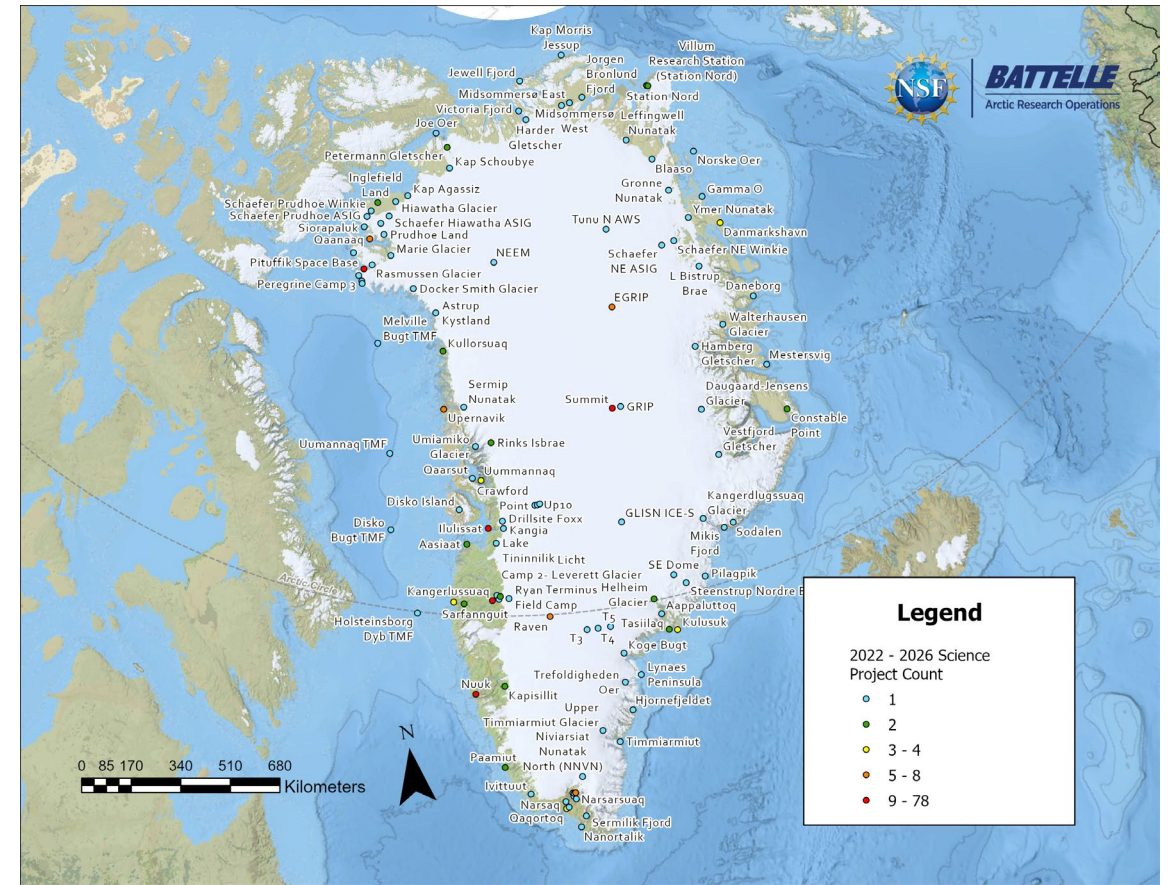
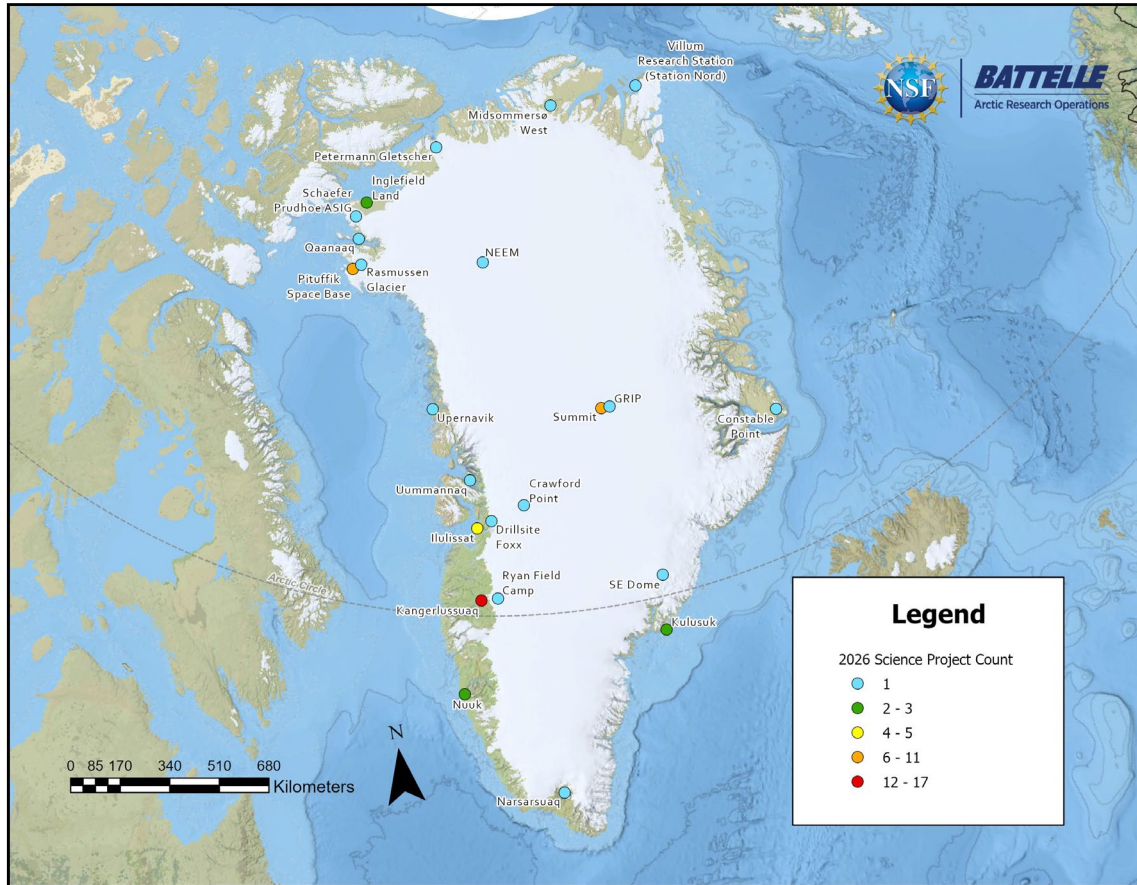
# Battelle-Arctic Research Operations: Introduction

- Work in collaboration with various entities to support NSF science projects:
  - Government of Greenland, Qeqqata Kommunia
    - Permitting and outreach
  - U.S. Air National Guard
    - 109<sup>th</sup> Airlift Wing ski-equipped LC-130 Hercules planes that can land on ice sheets (GL and Antarctica)
    - Other units support cargo and personnel delivery to the Kangerlussuaq hub via wheeled aircraft
  - Commercial air charters
  - Greenland vendors:
    - Greenland Airports/MIT, Air Greenland, GINR, Royal Arctic and village businesses throughout Greenland





# 2026 Greenland Science Project Support



# Kangerlussuaq – US science logistics hub





# Battelle-Arctic Research Operations: Locations

- Support science projects throughout Greenland – fixed sites:
  - Kangerlussuaq
    - Serves as the operations hub with staff present between March and September each year
    - Services: science team support, aircraft coordination, cargo support, outfitting science teams with gear and vehicles for field work, resupply to field sites, check-in support, fleet maintenance, housing coordination
    - Strong coordination with local agencies and business
    - Storage for multi-year projects and vessel cargo
  - Raven Camp
    - Open between April-August each year
    - Provide LC-130 training area, science project support



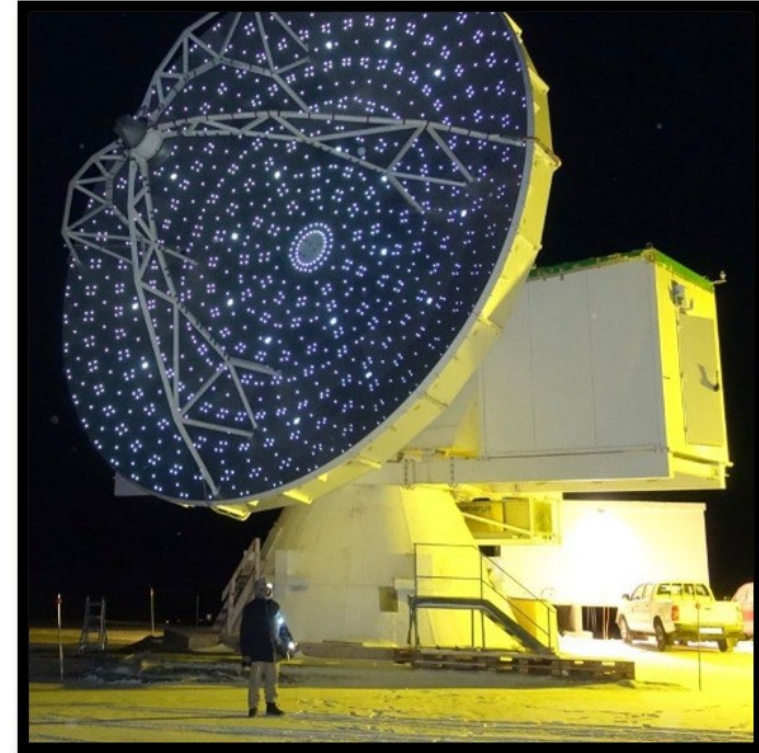
# Battelle-Arctic Research Operations: Locations

- Support science projects throughout Greenland – fixed sites:
  - Summit Station
    - Science station near the apex of the ice sheet with staff present all year.
    - Services: science team support, science instrumentation support and maintenance, aviation and cargo support, housing and meals, health and safety.
    - Many disciplines: cryospheric, atmospheric, astrophysical, engineering and training
    - SuMR – Summit Modernization and Recapitalization: a multi-year project to redevelop the station to support future scientific research



# Battelle-Arctic Research Operations: Locations

- Support science projects throughout Greenland – fixed sites:
  - Pituffik Space Base (formerly Thule Air Base)
    - Northernmost US Space Base – providing a unique platform that includes international scientific research as part of its mission
    - Open year-round
    - Staff support as needed – remote support routine
    - Services: science team support and coordination to perform research on the base and/or access the base enroute to other deep field sites in northern Greenland





# Battelle-Arctic Research Operations: Locations

- Support science projects throughout Greenland – villages and deep field sites:
  - Ilulissat
  - Sisimiut
  - Narsarsuaq
  - Uummannaq
  - Qaanaaq
  - Tasiilaq
  - Kulusuk
  - Ice sheet camps (various)
- Services:
  - Coordination with local vendors for arrangements to support science teams
  - Aircraft charters from village to field location
  - Providing gear and arranging cargo movement and sample storage



# 2026 Field Season

**Kangerlussuaq remains our operational hub for aviation and science support**

- **ANG flights between May – August 2026**
- **ANG flights to NSF-supported locations in Greenland**
- **Other military units support flights between US and Kangerlussuaq (earliest in March)**
- **Commercial flights will supplement within Greenland**
- **Support of science teams, Raven Camp training**
- **SuMR support – vessel deliveries and local materials storage for future years**
- **Continued cooperation around Greenland Airport changes**





# Outreach

- Science teams are responsible for outreach efforts – examples include 2 presentations to the Kangerlussuaq community in 2025
- Annual Moskus Run
  - 15<sup>th</sup> annual – 16 August 2026!
  - Battelle ARO, ANG, Local, US sponsorship with worldwide participation
  - Proceeds benefit the Kangerlussuaq School
    - 2025 proceeds: 57,000 DKK (\$9,000 USD)







**BATTELLE**  
Arctic Research Operations

<https://battlearcticgateway.org>  
Thank you! Qujanaq!